

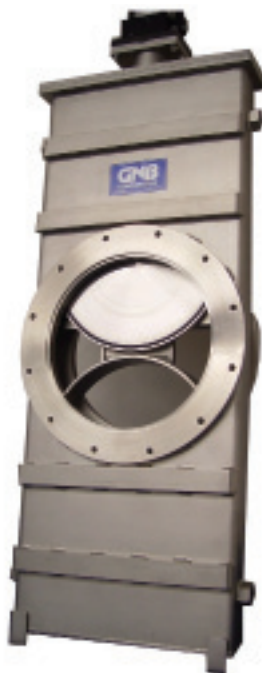
# PMG Gate Valves

## Protective Metal Guard Ring

### Specifications

- Leak Rate:  $<1 \times 10^{-9}$  std cc/sec He
- Vacuum Rating:  $1 \times 10^{-7}$  torr ( $1.3 \times 10^{-7}$  mbar)
- Seals in either direction with max differential pressure across gate: 1.5 atm (1.47 bar)
- Max Operating Temperature: 400 °F (200 °C)
- Mounting Position: Any
- Solenoid: 24V DC/110V AC/220V AC
- Air to open/Air to close
- Air Pressure Required: 80-120 psig (5.5-8.3 bar)

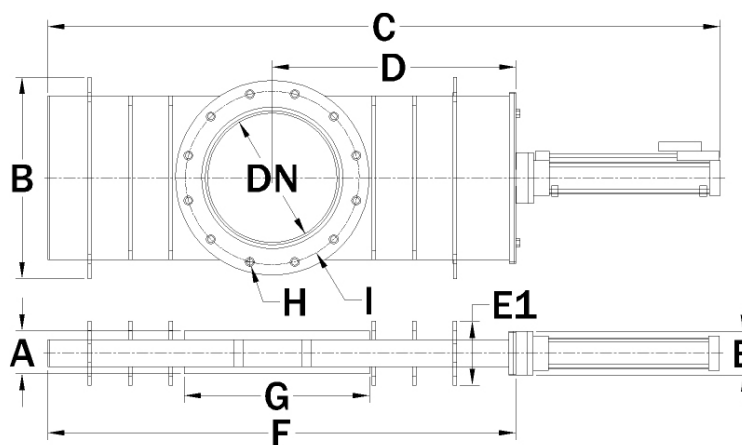
### For Highly Contaminated Environments



### Features

- Valve Body/Gate Construction: 304L Stainless Steel or Mild Steel
- Surface Finish: Glass Bead Blast, Grained, Electro-polished, or Painted Mild Steel
- Dual O-ring Sealed Shaft, 100K cycle life or Bellows Sealed rated up to 1 million cycles\*
- Actuator: Electro-pneumatic, Electric, or Hydraulic
- Magnetic Position Indicators Standard
- Viton or Buna O-rings at Flange, Gate, Bonnet, and Shaft
- Lubricated for life – Not affected by contaminants
- No Springs – Long life mechanism designed for 2 million cycles
- Minimal Maintenance – Does not require removal of valve body

\* Under clean vacuum conditions



REFERENCE NUMBER	DN in[mm]	A in[mm]	B in[mm]	C in[mm]	D in[mm]	E in[mm]	E1 in[mm]	F in[mm]	G in[mm]	H qt/size	I in[mm]	WT Kg/lb
PMG6P	7.0 [178.0]	3.6 [90.0]	12.0 [305.0]	38.9 [989.0]	12.9 [327.0]	3.5 [89.0]	3.8 [95.0]	25.2 [640.0]	12.0 [304.0]	(8) 3/4-10	9.5 [241.0]	59/130
PMG8P	8.0 [203.0]	4.3 [110.0]	13.5 [343.0]	55.3 [1406.0]	25.5 [648.0]	4.3 [108.0]	4.1 [105.0]	40.5 [1028.0]	13.5 [343.0]	(8) 3/4-10	11.8 [299.0]	77/170
PMG12P	12.0 [305.0]	4.5 [115]	17.8 [451]	64.2 [1630]	21.3 [540]	4.5 [114]	4.2 [107]	41.8 [1061.0]	16.7 [425]	(12) 7/16-14	15.6 [395]	159/350
PMG14P	14.0 [356.0]	4.6 [117.0]	21.8 [554.0]	72.4 [1839.0]	26.3 [667]	4.8 [121]	6.9 [176]	50.5 [1282]	21.0 [533]	(12) 1-8	18.8 [476]	204/450
PMG20P	20.0 [508.0]	7.4 [188]	29.3 [743]	109.8 [2788]	43.3 [1099]	6.8 [172]	8.6 [219]	79.6 [2022]	27.5 [699]	(20) 1.125-7	25.0 [635]	703/1550
PMG24P	24.0 [610.0]	10.2 [258]	40.5 [1029]	145.1 [3686]	58.9 [1495]	9.5 [241]	10.0 [254]	106.9 [2715]	36.5 [927]	(20) 7/8-9	29.5 [749]	1814/4000
PMG52P	52.0 [1321.0]	12.1 [308.0]	76.0 [1930.0]	249.4 [6335.0]	98.4 [2500.0]	12.3 [311.0]	20.6 [524.0]	184.7 [4690.0]	65.5 [1664.0]	(24) 1.25-7	58.0 [1473.0]	5443/12000